

## Three-Dimensional Figures 8.1

Essential Question: *What is a face, edge, and vertex of a solid?*

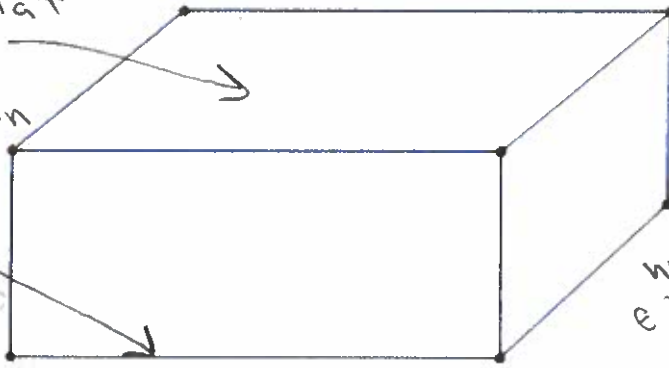
A solid is a three-dimensional figure that encloses a space.

A polyhedron is a solid whose faces are all polygons.

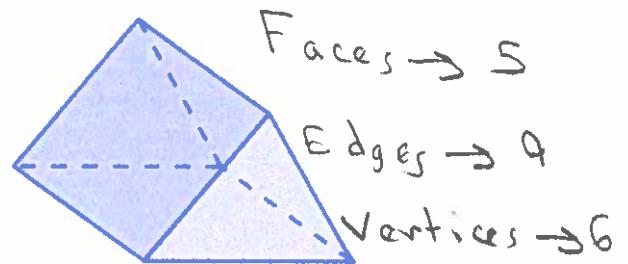
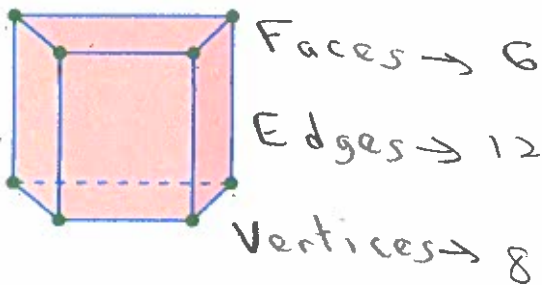
Face: a flat surface of a polyhedron

Edge: a line segment where 2 faces intersect

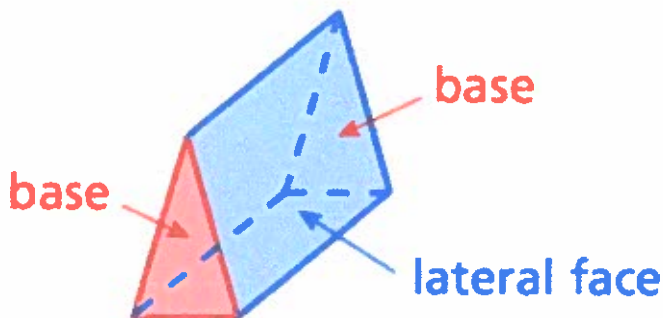
Vertex: a point where 3 or more edges intersect



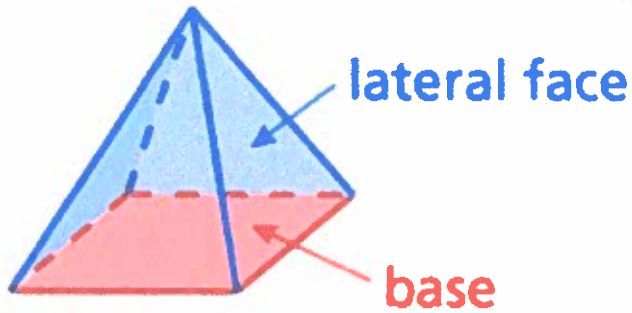
Find the number of faces, edges, and vertices of the solid.



A prism is a polyhedron that has two parallel identical bases. The lateral faces are parallelograms.

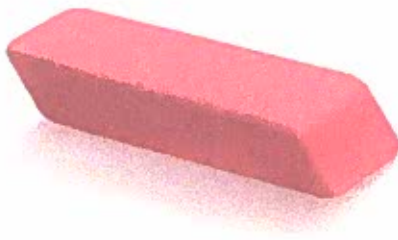


A pyramid is a polyhedron that has one base. The lateral faces are triangles.



The shape of the base tells the name of the prism or pyramid.

Draw the front, side, and top views of the solid.



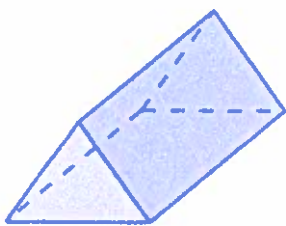
Front



Side



Top



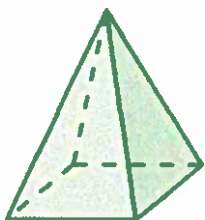
Front



Side



Top



Front



Side



Top

